

Extension to 24VDC Uninterruptible Power Supply (UPS)

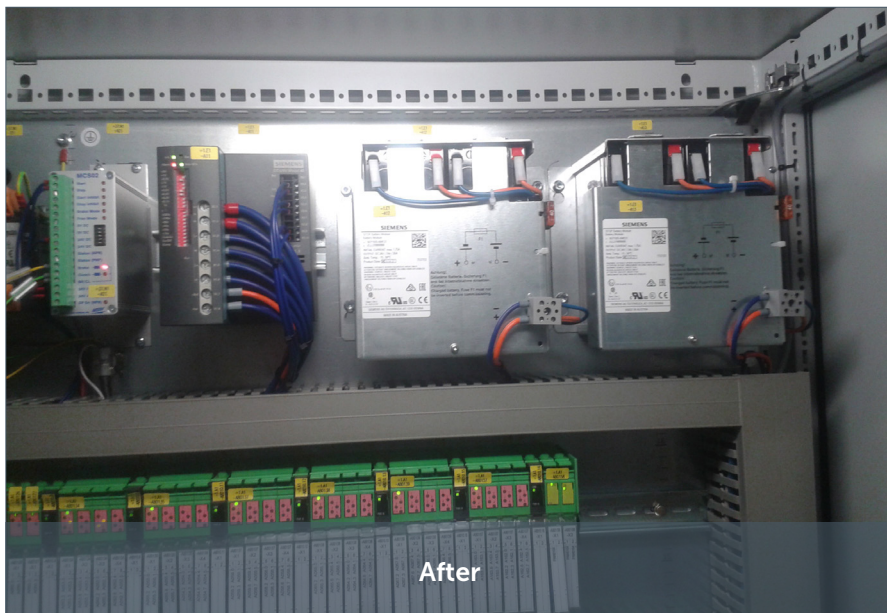
TIP S-7010

Electrical control

Benefits:

- No PLC data loss
- Controlled machine shut down
- Reduction of the load and mechanical wear and tear
- Easier and faster production restart

Safety	<input type="text"/>
Obsolescence	<input type="text"/>
Quality	<input type="text"/>
Cost Reduction	<input type="text"/>
Performance	<input type="text"/>
Maintenance	<input type="text"/>



Extension to 24VDC Uninterruptible Power Supply (UPS)

Machine Model for Improvement: All BW Bielomatik exercise book & spiral binding lines with mechanical gear box or electronic main drives.

Description of Improvement:

This upgrade is part of the Technical Improvement Program (TIP). It reduces the restarting efforts and minimizes rejection while ramping up the machine after an unexpected power outage.

A condenser battery is installed to ensure that the clutch and the 24V power supply is still active to perform a smooth and controlled shut down of the machine.

This reduces the load on the mechanical parts, e.g. the belts or paper jam in the overlapping section. Additionally, by synchronized coupling a faster production start is possible.

Extension to 24VDC uninterruptible power supply (UPS)

Included in this TIP:

- All required parts
- Necessary engineering
- Updated documentation pages

Estimated downtime, no production:

- 1,5 Days

Estimated startup, limited production:

- 0,5 Day

Estimated monitoring in production:

- 1 Day

Required manpower:

- 1 BW Papersystems Field Service Engineer
- 1 Skilled mechanic by customer
- 1 Skilled electrician by customer

(Additional local resources to be determined, if needed)

How can we help you? Please do not hesitate to contact us for any questions regarding our comprehensive Customer Service offerings:

TIPs/Upgrades:

- sales@bwpapersystems.com

Spare Parts:

- spares.stuttgart@bwpapersystems.com

Service Requests:

- service.stuttgart@bwpapersystems.com

Technical Problems:

- helpdesk.stuttgart@bwpapersystems.com

In case of emergency please contact our hotline 24 hours a day:

WORLDWIDE: +49 7022 7002 111

Please note: these statements are for general information only and are subject to change without prior notice. We would be pleased to send you a detailed offer, following an inspection of your machine.

03/2023