

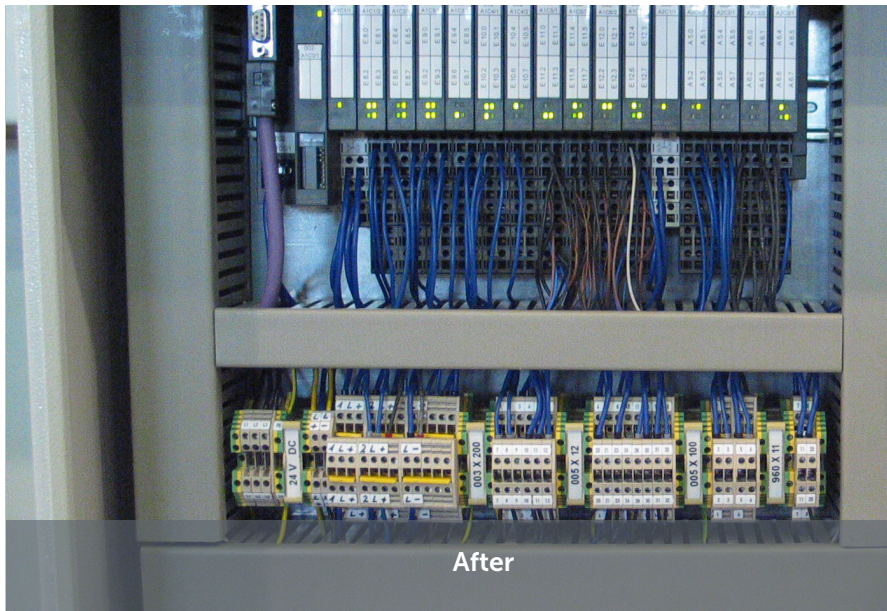
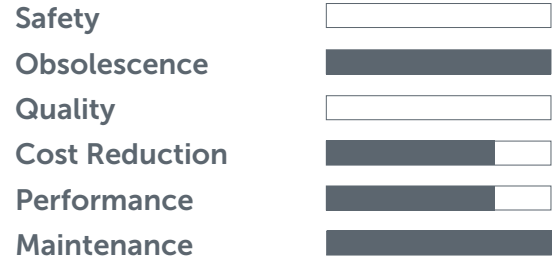
Siemens S7 Upgrade

P-5040

Control

Benefits:

- Spare parts availability guaranteed
- Increased functionality
- Increases the life span of the machine



Siemens S7 Upgrade

Machine Model for Improvement: Recommended for all Kugler-Womako PassPort Machines.

Description of Improvement:

This upgrade is part of the Technical Improvement Program (TIP) and delivers Siemens S7 thus replacing the previous control. This modules provides a set of hard- and software parts to upgrade the control of the machine to the new Siemens S7 control.

This upgrade increases the life span of the machine, ensures it's increased functionality and secures the availability of spare parts. In case of troubles at the machine, BW Papersystems is able to remotely assist you in trouble shooting through VPN router which is available upon request.

Siemens S7 Upgrade

Note:

- We recommend this TIP to be installed together with P-5020.

Included in this TIP:

- All required parts
- Necessary engineering
- Updated documentation pages

Estimated downtime, no production:

- 2-4 Days

Estimated startup, limited production:

- 1-2 Days

Estimated monitoring in production:

- 1 Day

Required manpower:

- 1 BW Papersystems Field Service Engineer

(Additional local resources to be determined, if needed)

Installation is not included and will be quoted separately.

How can we help you? Please do not hesitate to contact us for any questions regarding our comprehensive Customer Service offerings:

TIPs/Upgrades:

- aftermarket.stuttgart@bwpapersystems.com

Spare Parts:

- spares.stuttgart@bwpapersystems.com

Service Requests:

- service.stuttgart@bwpapersystems.com

Technical Problems:

- helpdesk.stuttgart@bwpapersystems.com

In case of emergency please contact our hotline 24 hours a day:

WORLDWIDE: +49 7022 7002 111

Please note: these statements are for general information only and are subject to change without prior notice. We would be pleased to send you a detailed offer, following an inspection of your machine.