

Drive/PLC Upgrade

TIP Z016-0003

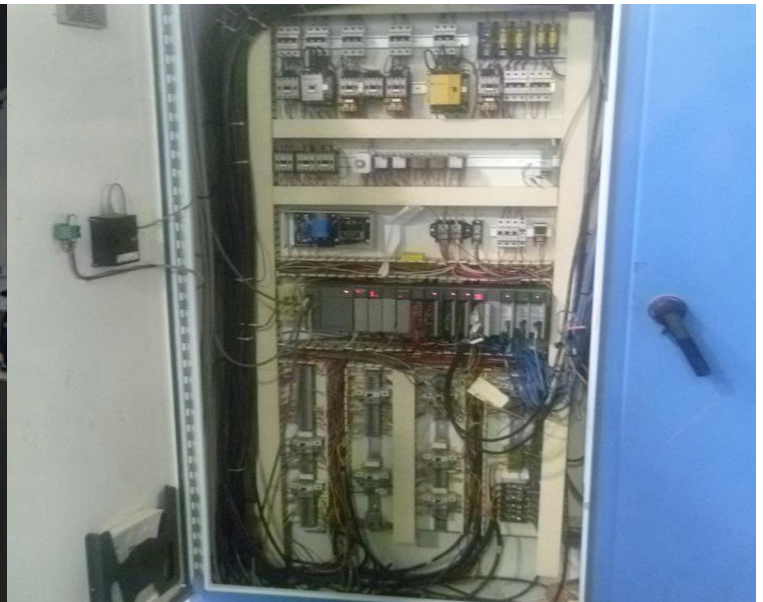
Control System

Benefits:

- Cost Effective upgrade to decrease obsolescence risk
- Improves performance...
- Easier to maintain



Revised Design



Original Design

Drive/PLC Upgrade

Machine Model for Improvement: All Zerand Cutter Lines

Description of Improvement:

This improvement can be applied to the control systems of any existing line of equipment. The existing functions can be upgraded as is or can be upgraded to replace mechanical drive trains and install servo motors and higher performance controls. The features and functions that will be available are dependant on the scope of the control system upgrade. This improvement may include new unit HMI's and a new main console computer as well. Each system will be evaluated on a case by case basis with input on the scope required by the customer.

Drive/PLC Upgrade

Included in this TIP:

- All required parts
- Necessary engineering
- Updated documentation pages for relevant sections

Estimated downtime, no production:

- 3 days

Estimated startup, limited production:

- 1 day

Estimated monitoring in production:

- 1 day

Required manpower:

- 1 BW Papersystems Mechanical Field Service Engineer
- 1 BW Papersystems Electrical Engineer
- Additional Assistance from Customers' Maintenance

(Additional local resources to be determined, if needed)

How can we help you? Please do not hesitate to contact us for any questions regarding our comprehensive Customer Service offerings:

TIPs/Upgrades:

- tips.zerand@bwpapersystems.com

Spare Parts:

- zerandparts@bwpapersystems.com

Service Requests:

- zerandservice@bwpapersystems.com

In case of emergency please contact our hotline 24 hours a day:

NORTH AMERICA +1 262 827 3800

Please note: these statements are for general information only and are subject to change without prior notice. We would be pleased to send you a detailed offer, following an inspection of your machine.